

CONTROLS.

refer to "User Guide" for step-by-step instruction on how to navigate this document.

STEP 01 - RESIDENTIAL DOOR

- existing residential door 'left'
- existing residential door 'right'
- no residential door

STEP 03 - ADDITIONS

- awning
- festoon lighting
- hanging sign

STEP 02 - NEW SHOP FRONT

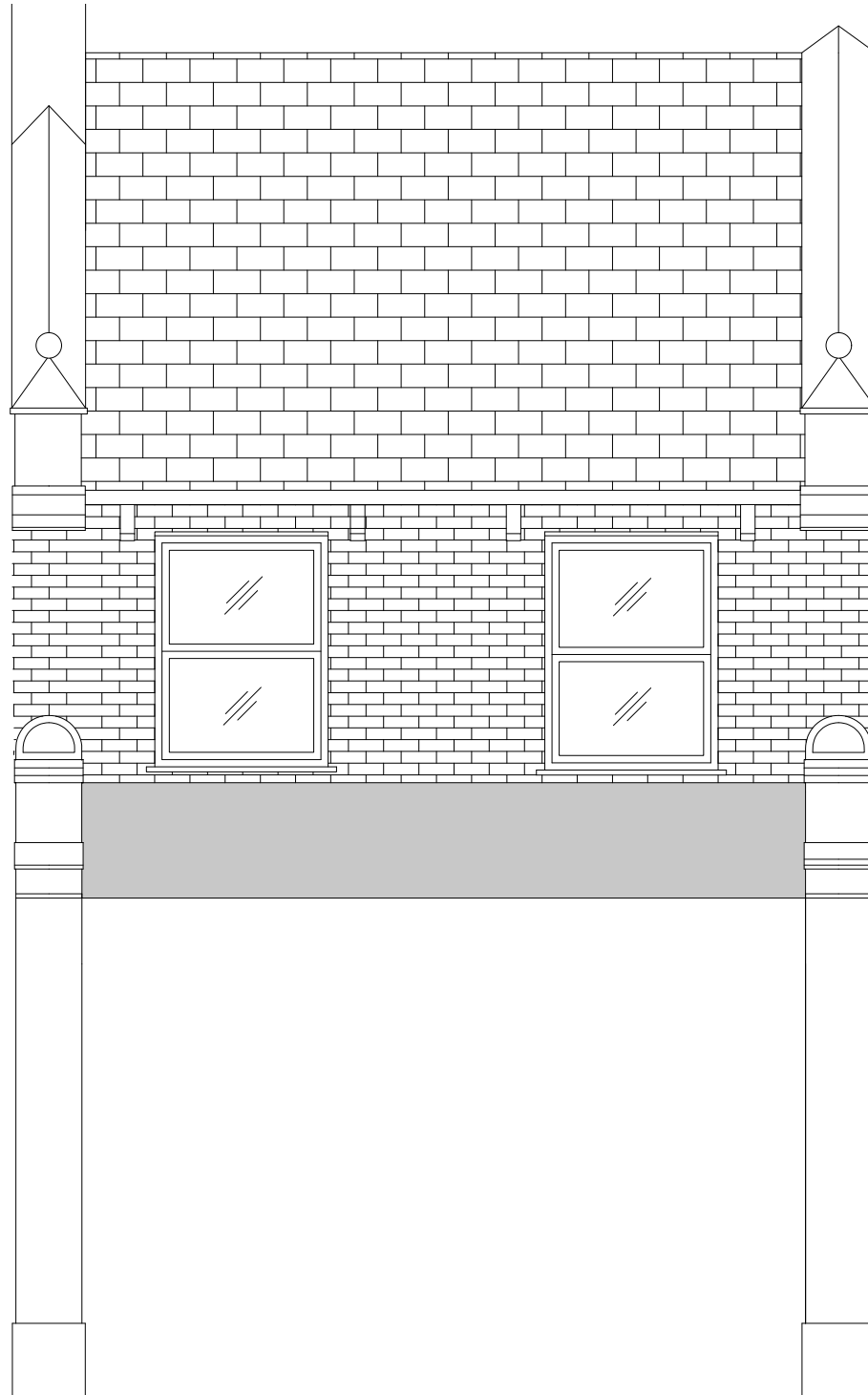
- option 1 'left'
- option 1 'right'
- option 1 store riser 'left'
- option 1 store riser 'right'

- option 2 'left'
- option 2 'right'
- option 2 store riser 'left'
- option 2 store riser 'right'

- option 3 'centre' - no resi
- option 3 store riser 'centre' - no resi

STEP 04 - SIGNAGE

- main text
- secondary text
- door number 'left'
- door number 'right'



NAME.


ADDRESS.

DRAWING NO.

SCALE.
1:50 @ A4

DATE.

DESIGN AND ACCESS STATEMENT.

 RESI. DOOR COLOUR.

 SHOP FRONT COLOUR.

 FASCIA COLOUR.

MAIN TEXT.

SECONDARY TEXT.

If the buttons appear not to be working, double clicking off the page onto the grey area in the document should reset it and the buttons should continue to work. Or if this fails, closing and re-opening the document should fully reset it.